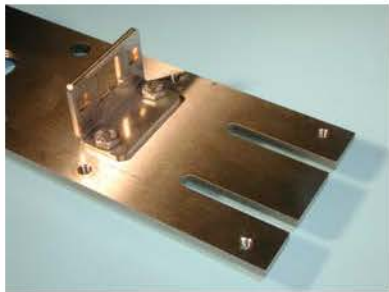
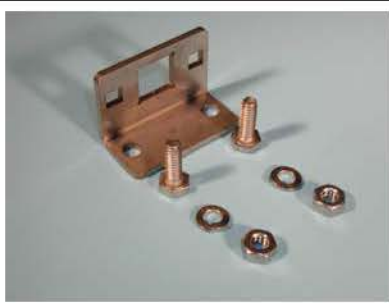




## MODEL 204AR-S ASSEMBLY INSTRUCTIONS



Attach the Slide Bracket to the base using 1/4-20 x 1/2" hex bolts with lock washer and nut, tighten.

1



Attach Adjusting Rod bracket using 1/4"-20 x 5/8" carriage bolts with Lock washer and nut, do not tighten.

2



Assemble roller slide. Use (1) 5/16-18 x 1" hex bolt, bearing and 5/16 lock washer.

3



Screw (3) set screws into cam assembly. Mount to hinge plate just below rubber bearing seal. Position determines where boom will rotate to.

4

## MODEL 204AR-S ASSEMBLY INSTRUCTIONS (continued)



1"- 14 Lock nut underneath

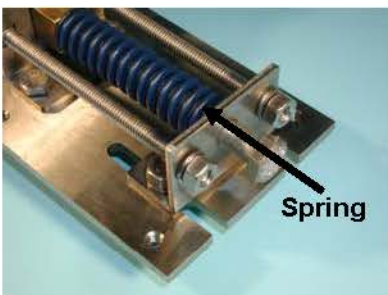
Insert roller slide assembly and adjusting bolts into slide bracket. Screw hinge plate assembly to the Auto Return mounting plate. Attach locking nut on reverse side.

5



Insert spring between roller slide and adjusting bracket. Screw 3/8"-16 x 4" bolt through center.

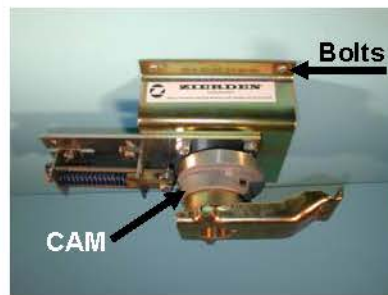
6



Spring

Screw (2) 1/4"-20 x 4" Carriage nuts. These are used to adjust tension on spring.

7



Bolts

CAM

Bolt Auto Return unit to the mounting base. Mounting Base must have short 3/8 " x 3/4" long bolts. They may be screwed in from the bottom or the top.

Rotate cam assembly to return position desired.

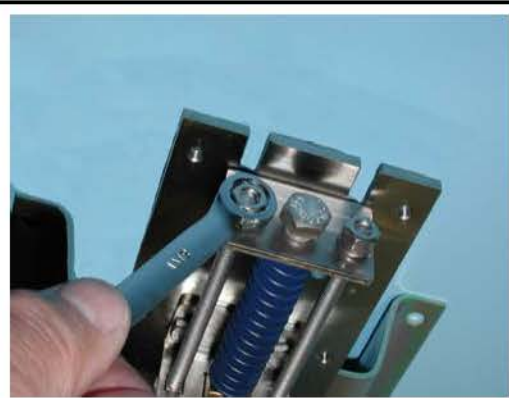
8

## MODEL 204AR-S ASSEMBLY INSTRUCTIONS (continued)



Install Boom Body assembly to hinge plate.

9



Adjust spring tension by tightening the two 1/4" nuts on adjusting rods. Tension should be strong enough to allow boom to rotate back to its desired position.

10



Fasten cover using 10-32 pan head screws. Cover should not protrude beyond the roller slide bracket.

11

